

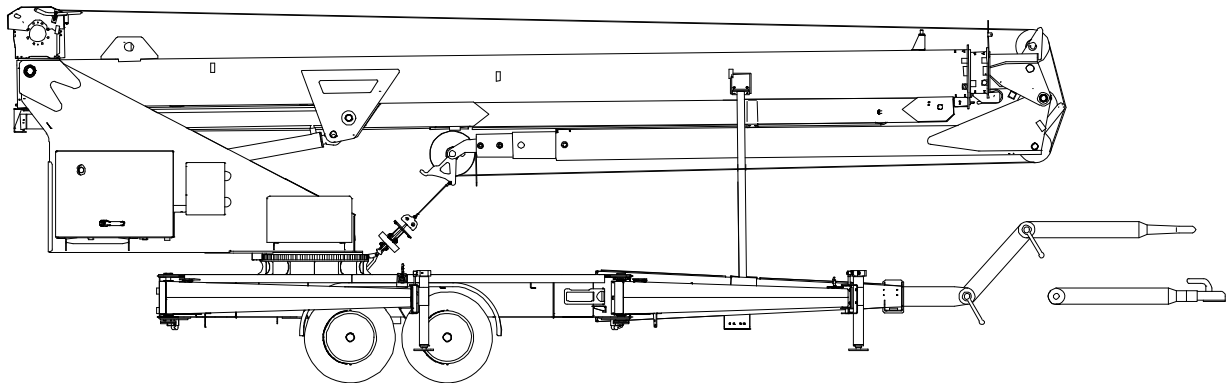




1 / 2

Böcker Aluminium-Trailer Crane – AHK 30/1600

as at 07/2010



Description	Data	
Total length	9,10 m	
Total width	2,30 m	
Total height	2,86 m	
Dead weight	3.500 kg	
Gross vehicle weight	3.500 kg	
Max. erection angle telescope arm	85°	
Jib length extended	9,00 m	
Jib length retracted	4,75 m	
Jib variable / hydraulic	0° - 165°	
Max. extension length	30,00 m	
Max. hook speed	60 m/min	
Support area double-sided	L x W 5,40 x 5,40 m	
Support area one-sided	L x W 7,30 x 3,75 m	
Swivelling range	± 310°	
Drive unit	Honda 24 hp petrol engine/Mitsubishi Diesel engine	
Hydraulic unit	with variable displacement pump	
Max. operation width	at 100 kg	24,00 m
	at 250 kg	19,00 m
	at 300 kg	16,60 m
	at 400 kg	14,30 m
	at 800 kg	8,60 m
	at 1000 kg	6,40 m
	at 1200 kg	5,00 m
	at 1400 kg	4,00 m
at 1600 kg	3,00 m	

All rights reserved for changes in dimensions and construction!

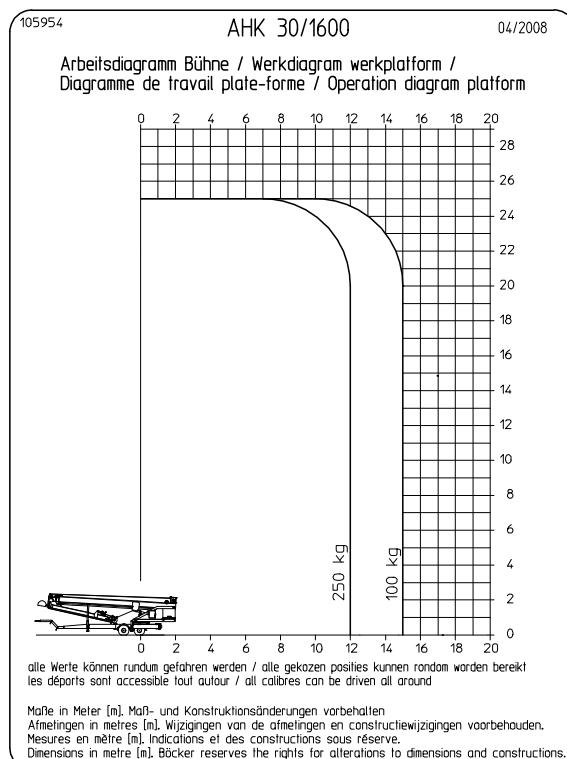
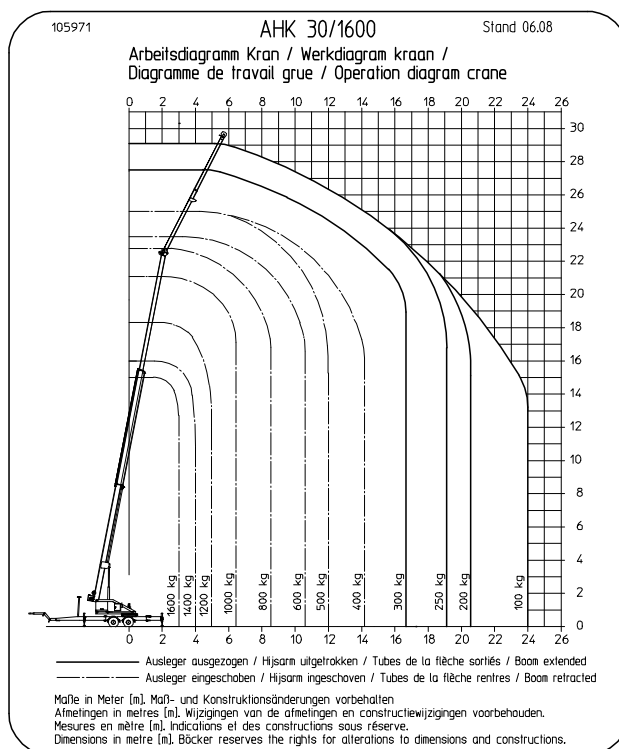


Böcker

INFO

2 / 2

Böcker Aluminium-Trailer Crane – AHK 30/1600



All rights reserved for changes in dimensions and construction!